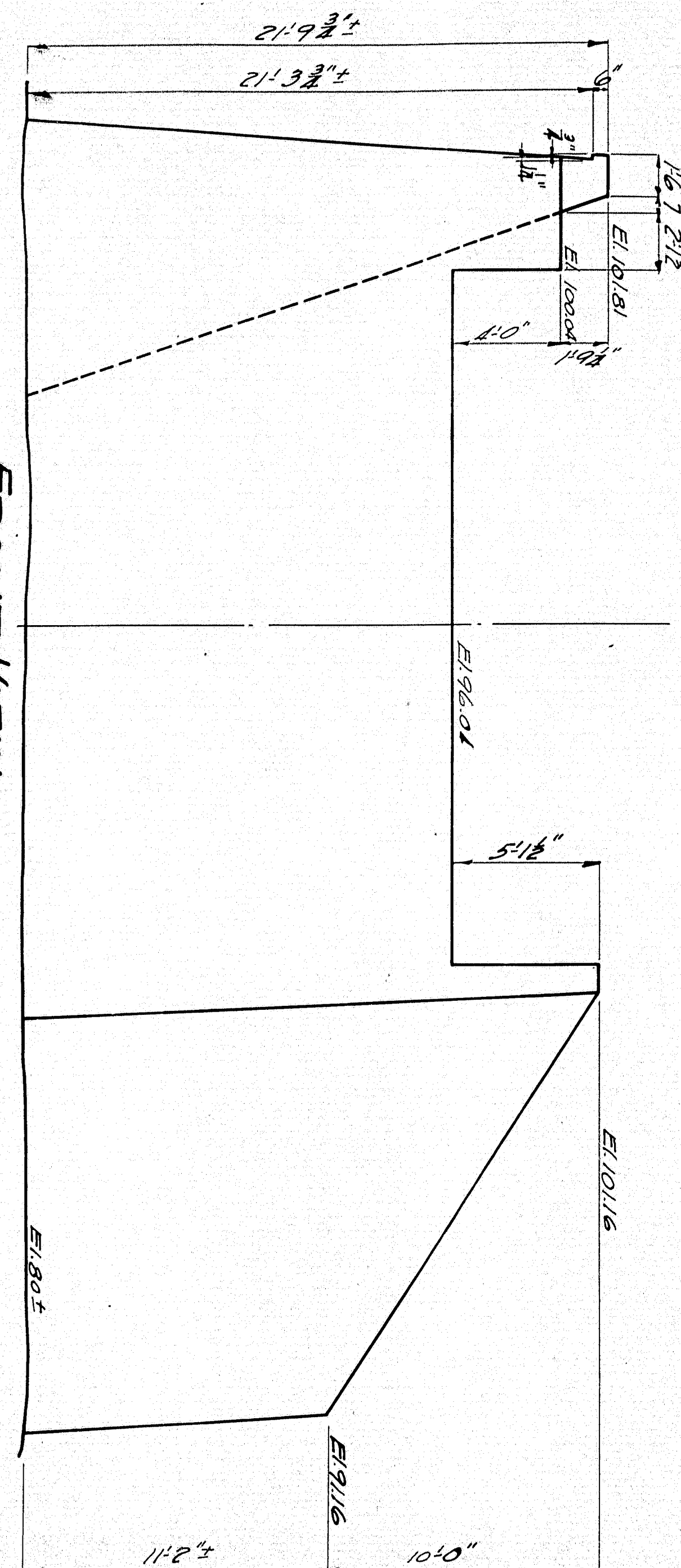
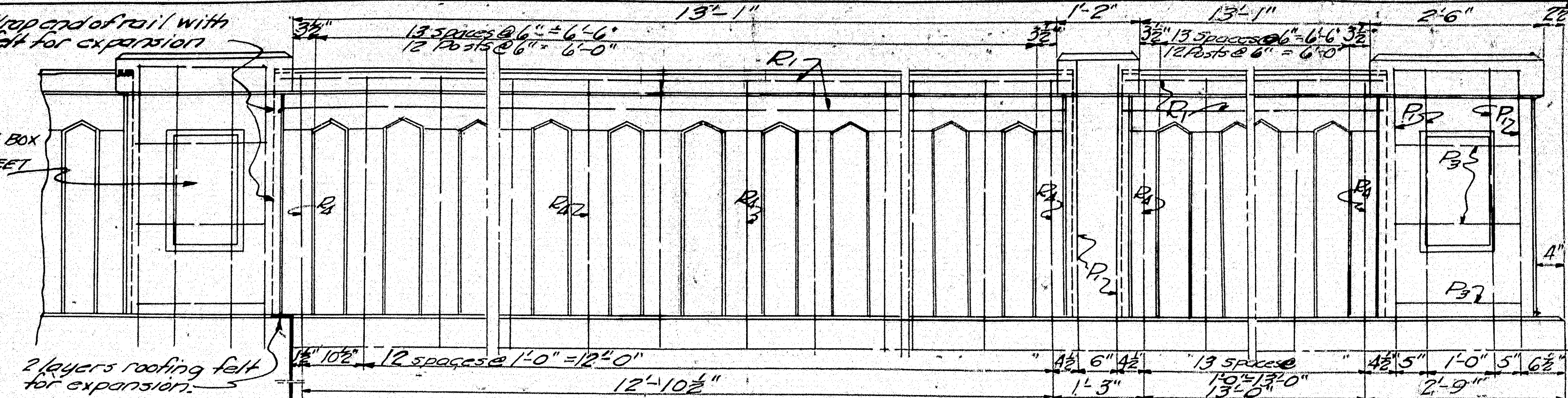


FRONT VIEW

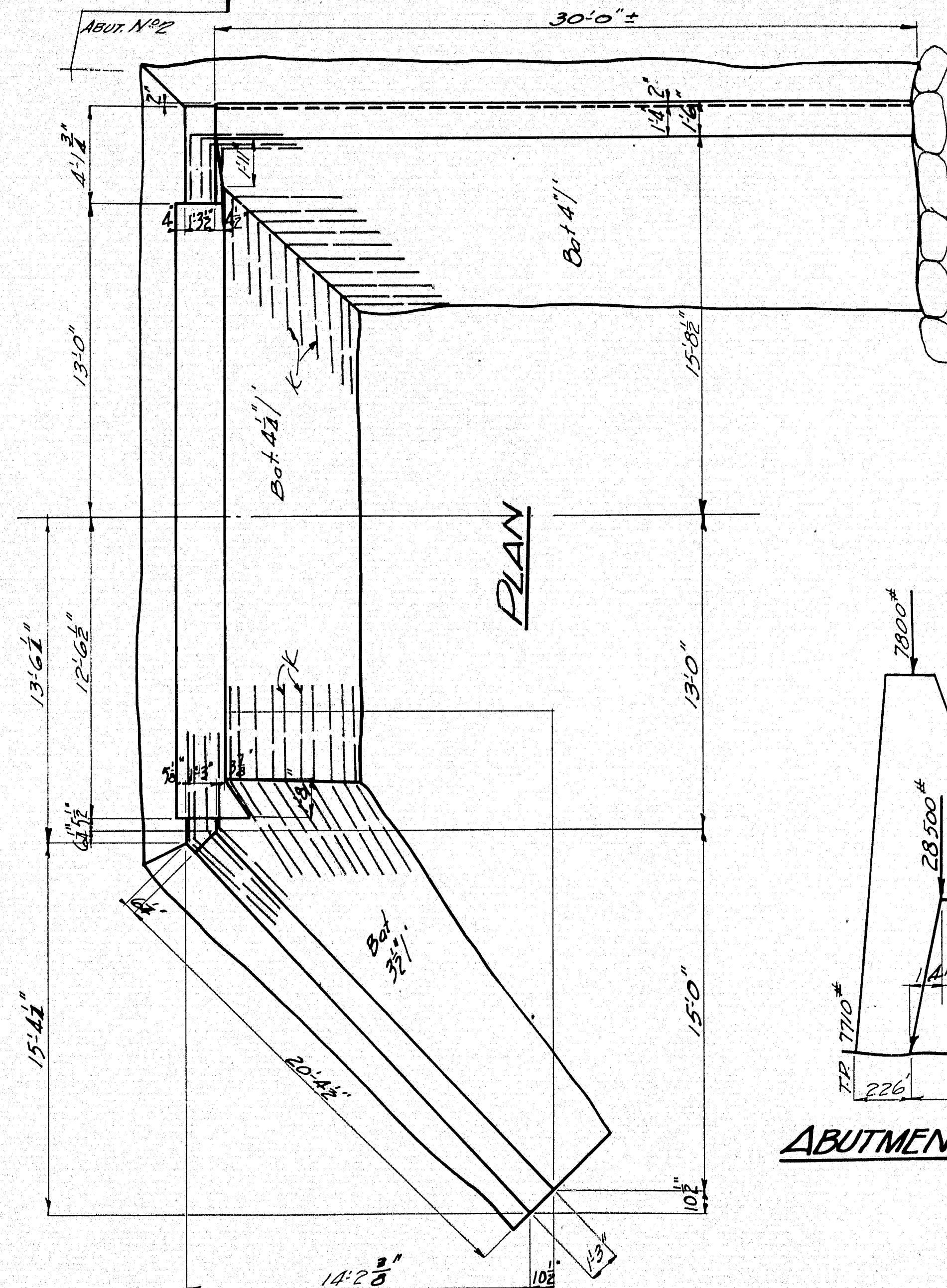


Wrap end of rail with roofing felt for expansion.
FOR JUNCTION BOX DETAIL SEE SHEET NR. 5.

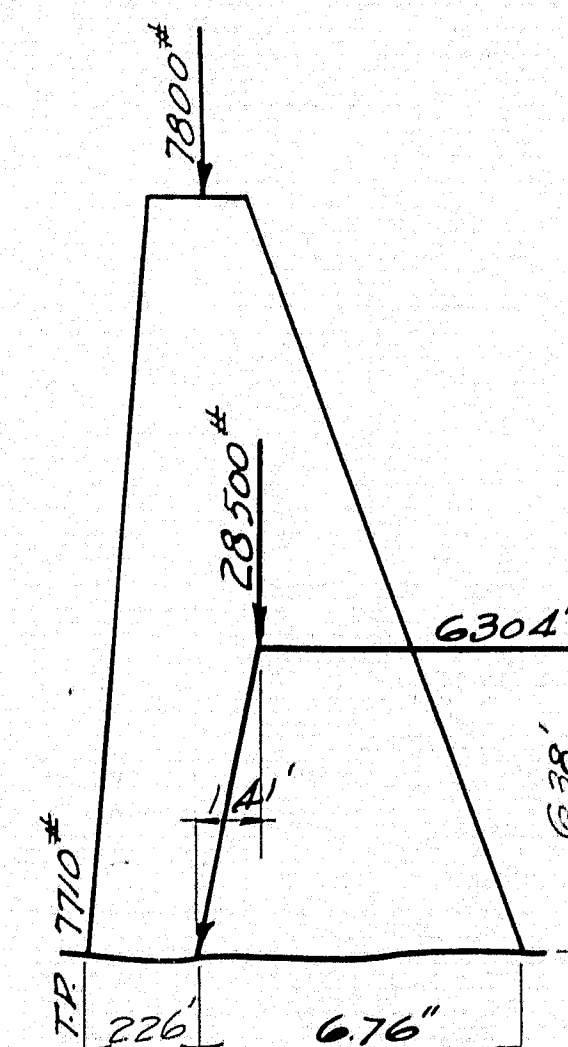


RAIL DETAIL - RETAINING WALL ABUT. NO. 2.
Cut R. bars to fit and splice.

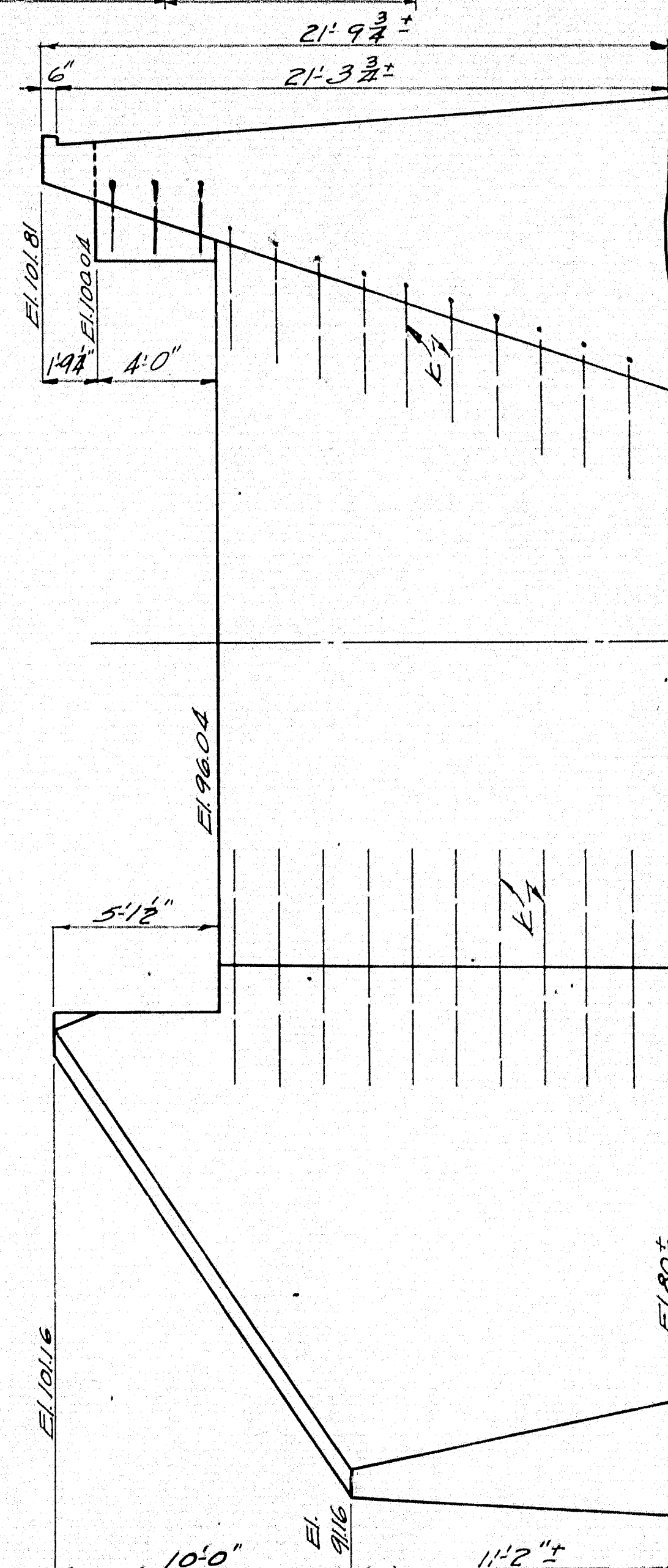
PLAN



ABUTMENT ANALYSIS



REAR VIEW

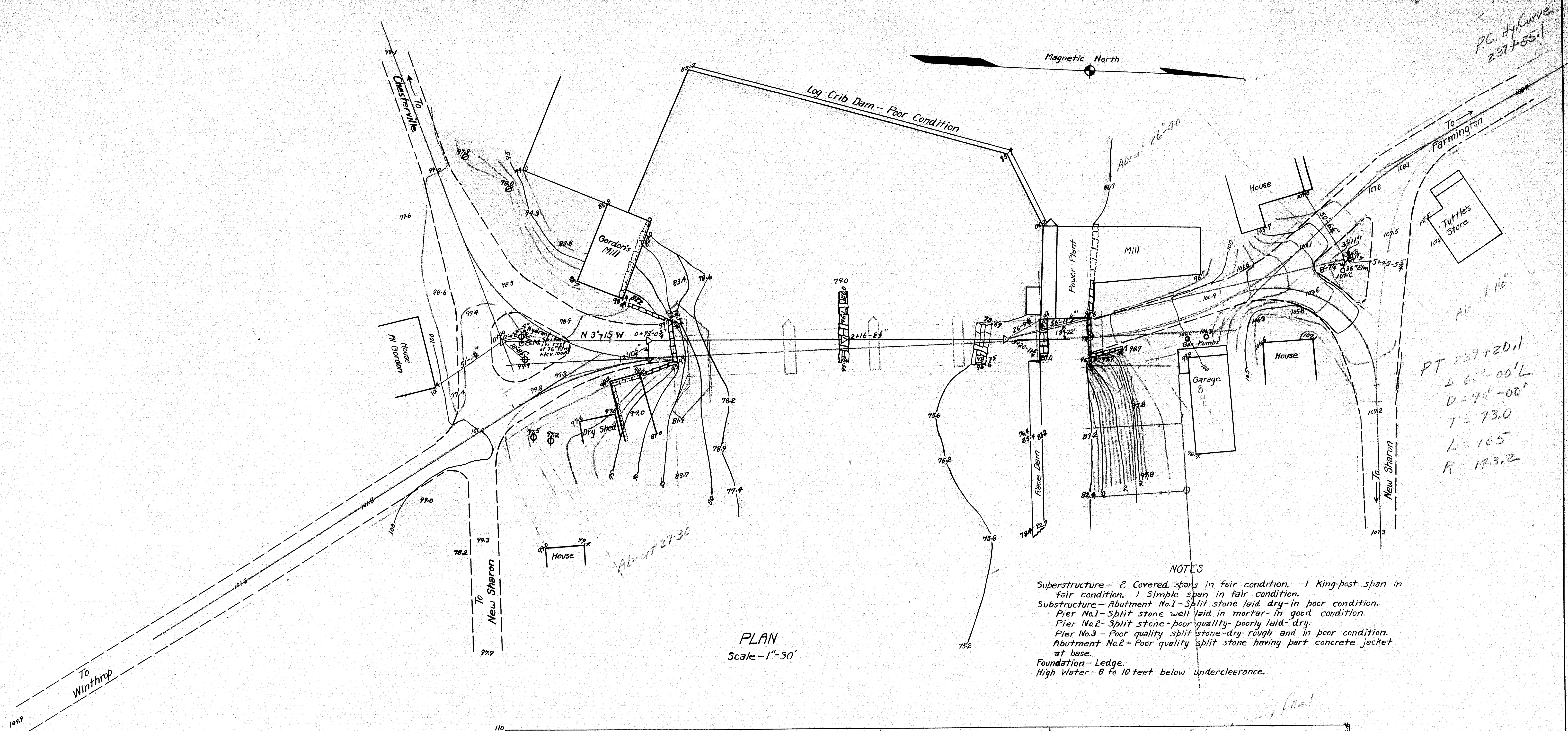


Note: It is to be placed at junction of bridge and retaining wall. Also see detail for junction box. Also see detail for junction box. Also see detail for junction box.

MAINE HIGHWAY COMMISSION
BRIDGE DIVISION
FARMINGTON FALLS BRIDGE
OVER
SANDY RIVER
BETWEEN THE TOWNS OF
FARMINGTON & CHESTERVILLE
FRANKLIN CO.
ABUTMENT NO. 2
SHEET 6310 AUGUST 1910

Revised plan for
Abut. No. 2. Sheet No. 19.

13-101



NOTES

Superstructure - 2 Covered spans in fair condition. 1 King-post span in fair condition. 1 Simple span in fair condition.

Substructure - Abutment No. 1 - Split stone laid dry - in poor condition.

Pier No. 1 - Split stone well laid in mortar - in good condition.

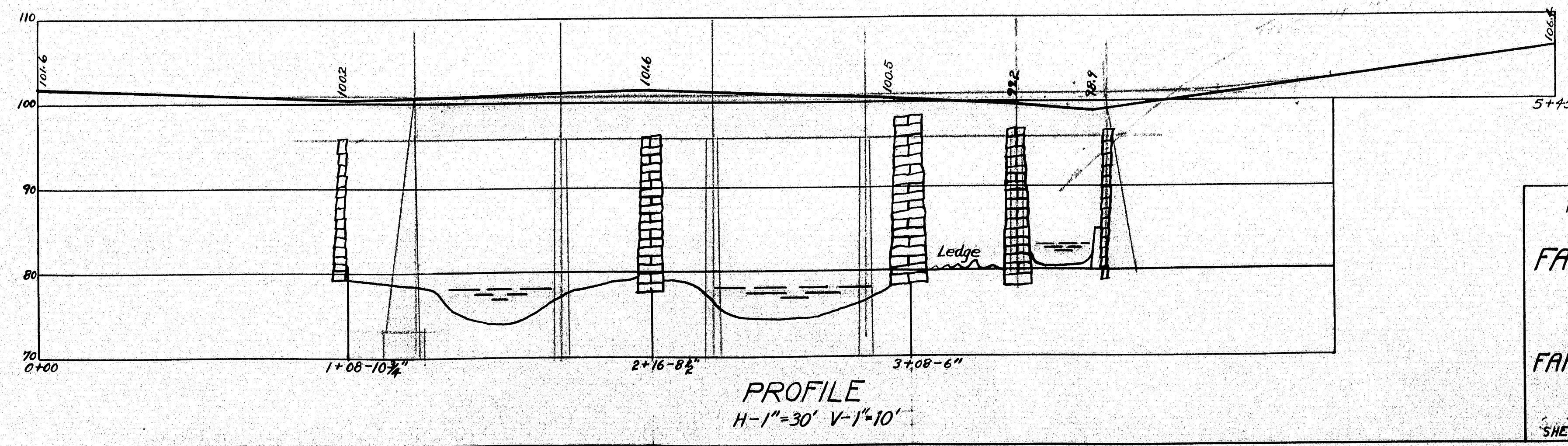
Pier No. 2 - Split stone - poor quality - poorly laid - dry.

Pier No. 3 - Poor quality split stone - dry - rough and in poor condition.

Abutment No. 2 - Poor quality split stone having part concrete jacket at base.

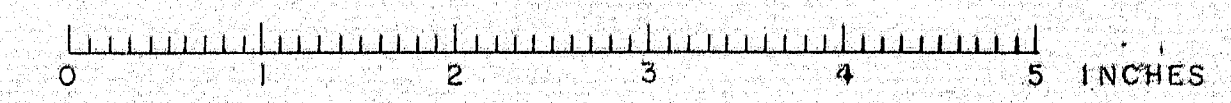
Foundation - Ledge.

High Water - 8 to 10 feet below underclearance.



MAINE HIGHWAY COMMISSION
BRIDGE DIVISION
FARMINGTON FALLS BRIDGE
OVER
SANDY RIVER
IN THE TOWNS OF
FARMINGTON and CHESTERVILLE
FRANKLIN CO.
SURVEY PLAN
AUGUST 1929
SHEET 1 of 8
FEB. 7, 1929

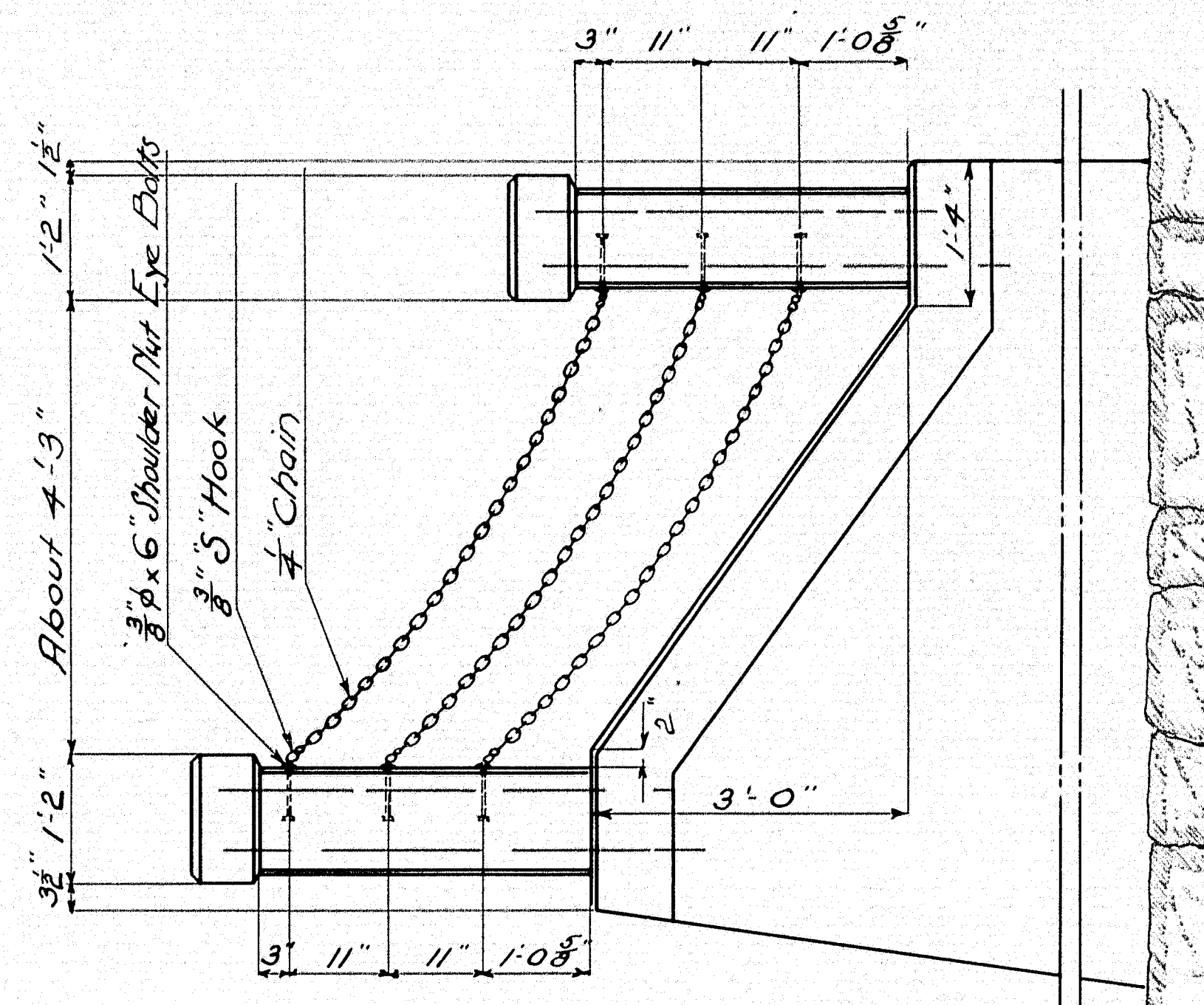
13-179



Survey by H.L.R.
Plot by J.L.B.

[illegible][illegible]

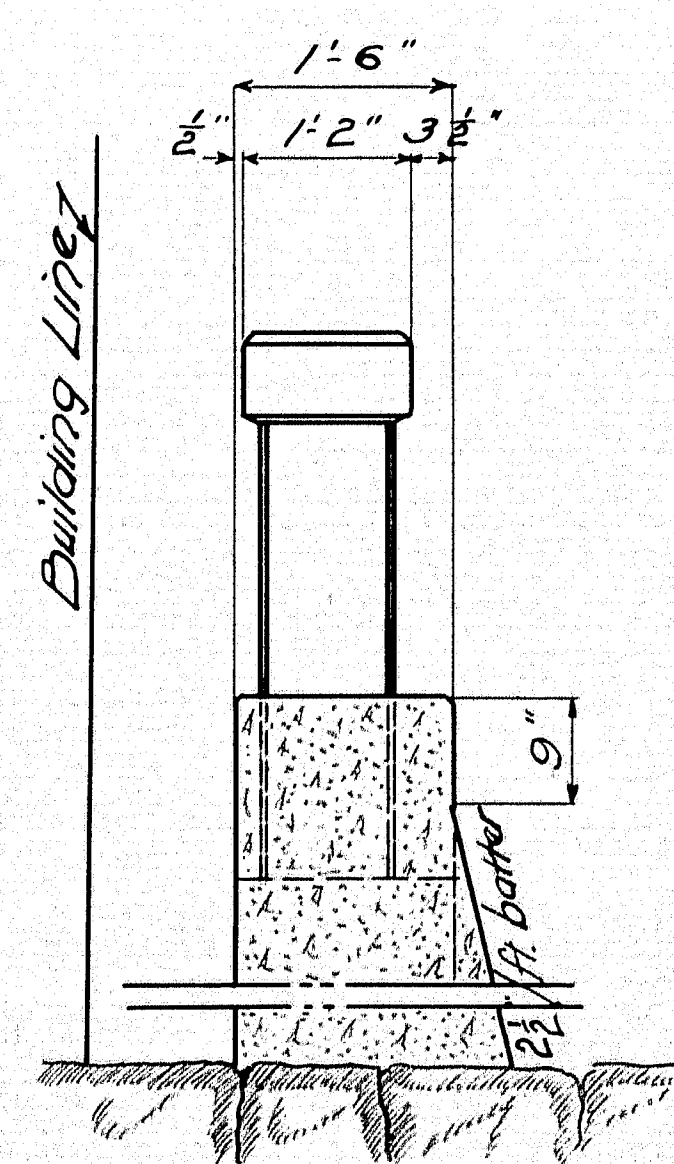
PLAN



WING ELEVATION

NOTE 2

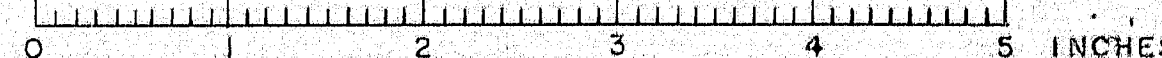
$4 \sim \frac{3}{4}" \phi \times 4'6"$ bars are required for posts.
 $12 \sim \frac{3}{8}" \phi \times 6'$ Shoulder Nut Eye Bolts (Galvanized) (To be ordered).
 $12 \sim \frac{3}{8}" \phi$ Hooks (" " ")
 $30'0"$ of $\frac{1}{4}"$ chain (" " ")

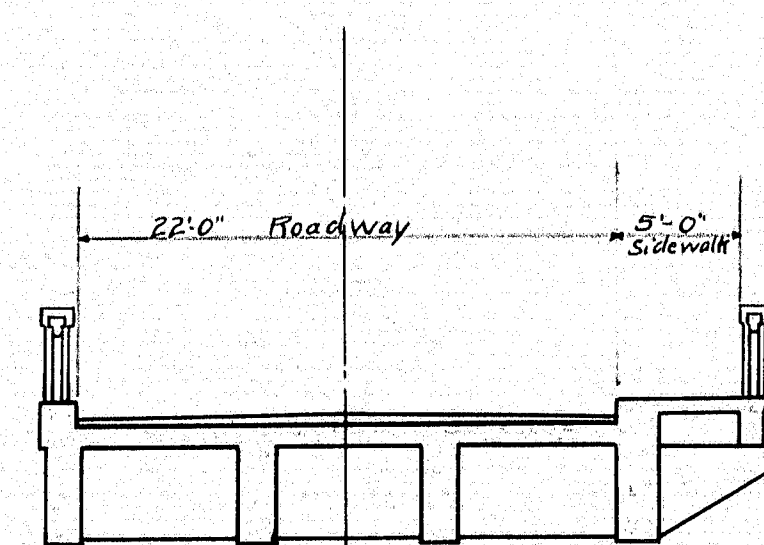
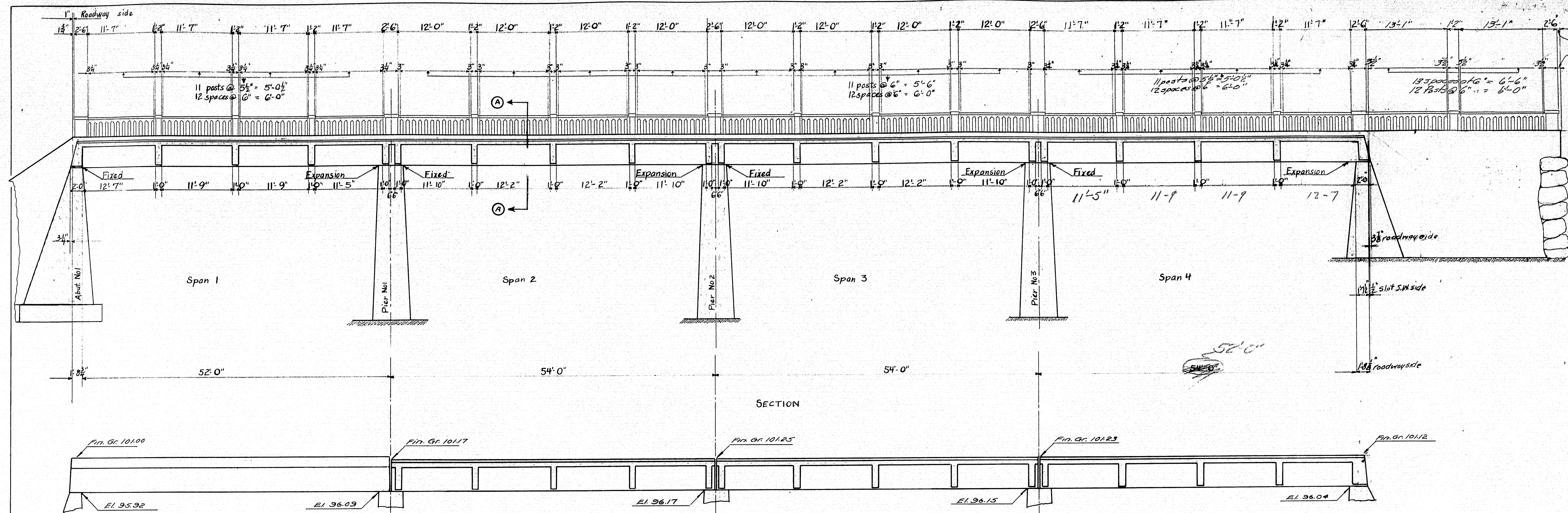


SECTION A-A

MAINE HIGHWAY COMMISSION
BRIDGE DIVISION
FARMINGTON FALLS BRIDGE
OVER
SANDY RIVER
IN THE TOWNS OF
FARMINGTON and CHESTERVILLE
FRANKLIN Co.
DETAILS OF EXTENSION AT ABUTMENT #2
SHEET of AUGUSTA, ME.

13-180

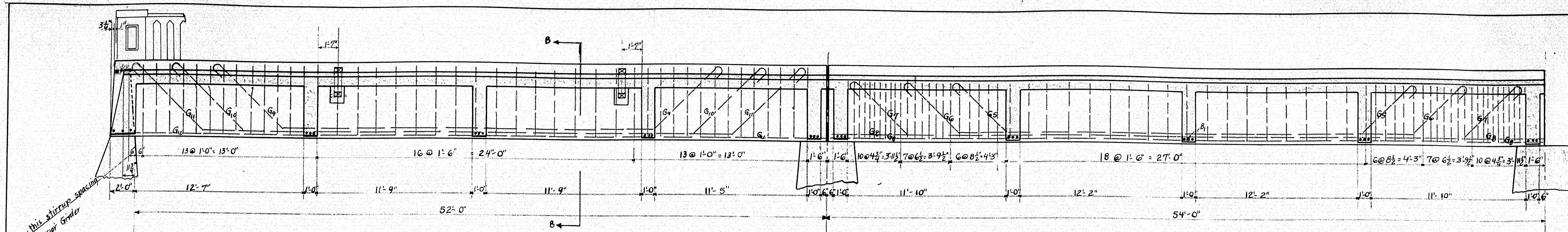




MAINE HIGHWAY COMMISSION
BRIDGE DIVISION
FARMINGTON FALLS BRIDGE
OVER
SANDY RIVER
BETWEEN THE TOWNS OF
FARMINGTON and CHESTERVILLE
FRANKLIN CO.
GENERAL PLAN
SHEET 2 OF 8 AUGUSTA, ME.

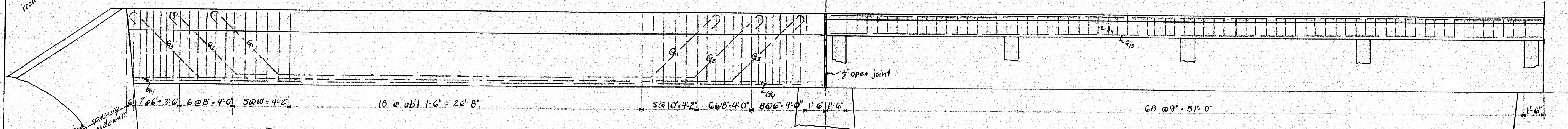
13-181





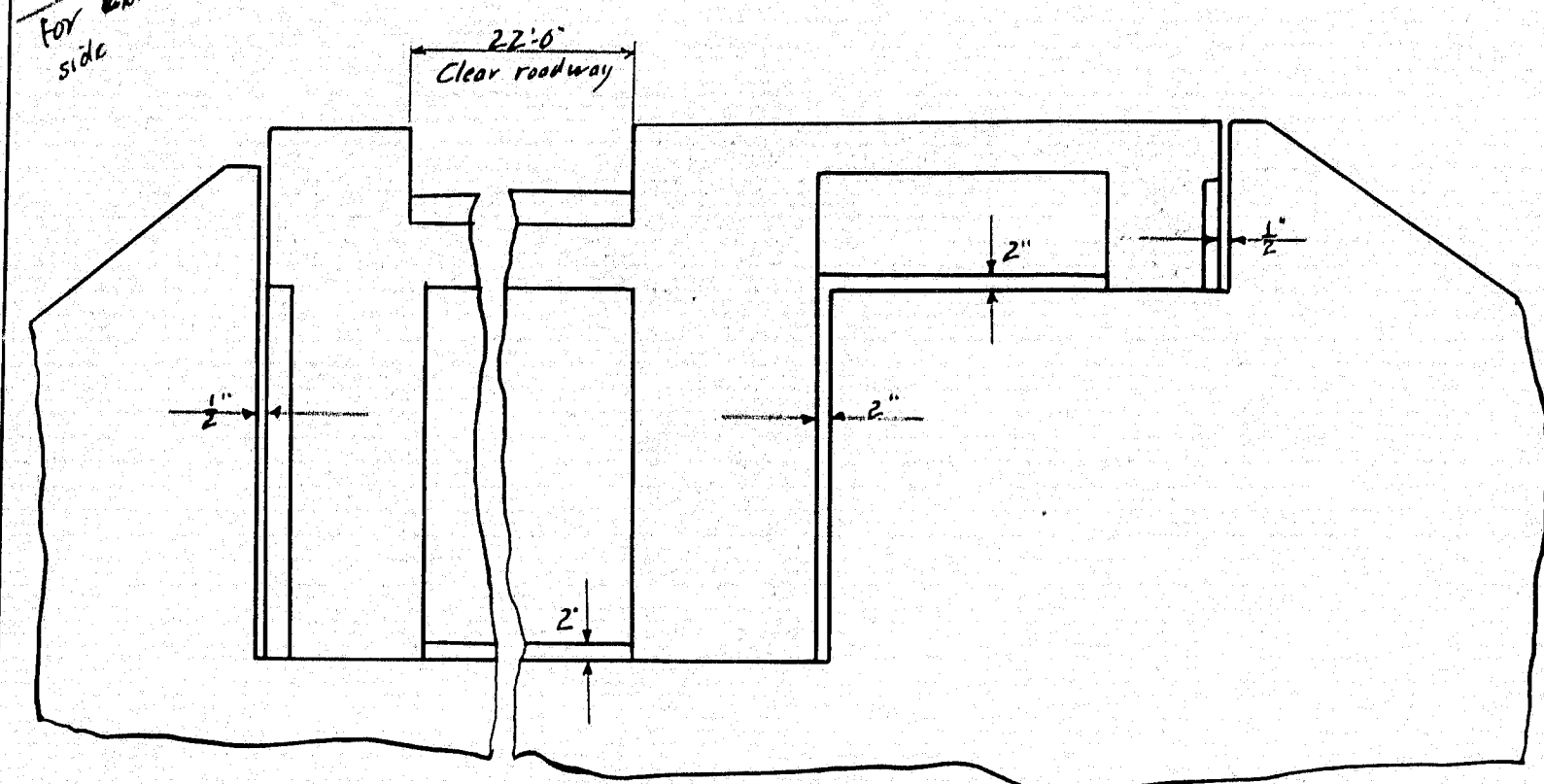
SECTION SPAN 1 SHOWING EXTERIOR GIRDER SIDEWALK SIDE
Other spans similar

SECTION SPAN 2 SHOWING INTERIOR GIRDER
Other spans similar



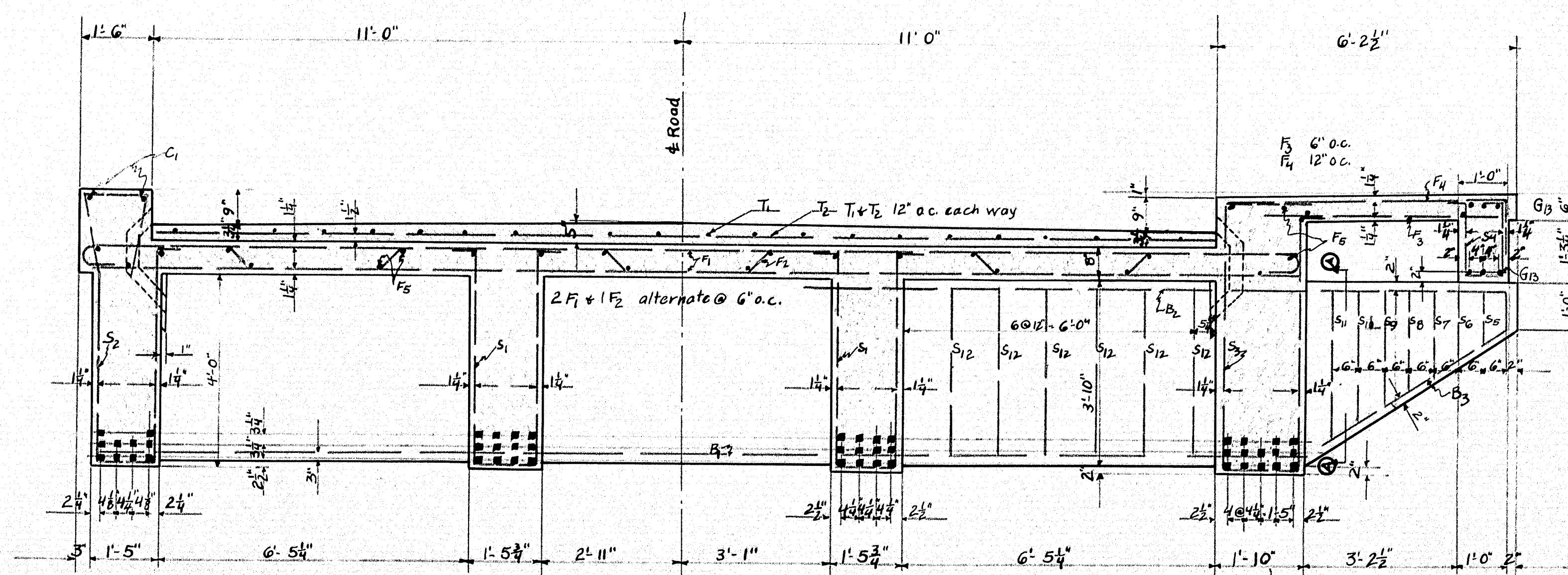
ELEVATION SPAN 1 SHOWING EXTERIOR GIRDER ROADWAY SIDE
Other spans similar

SECTION SPAN 2 SHOWING SIDEWALK GIRDERS
Other spans similar

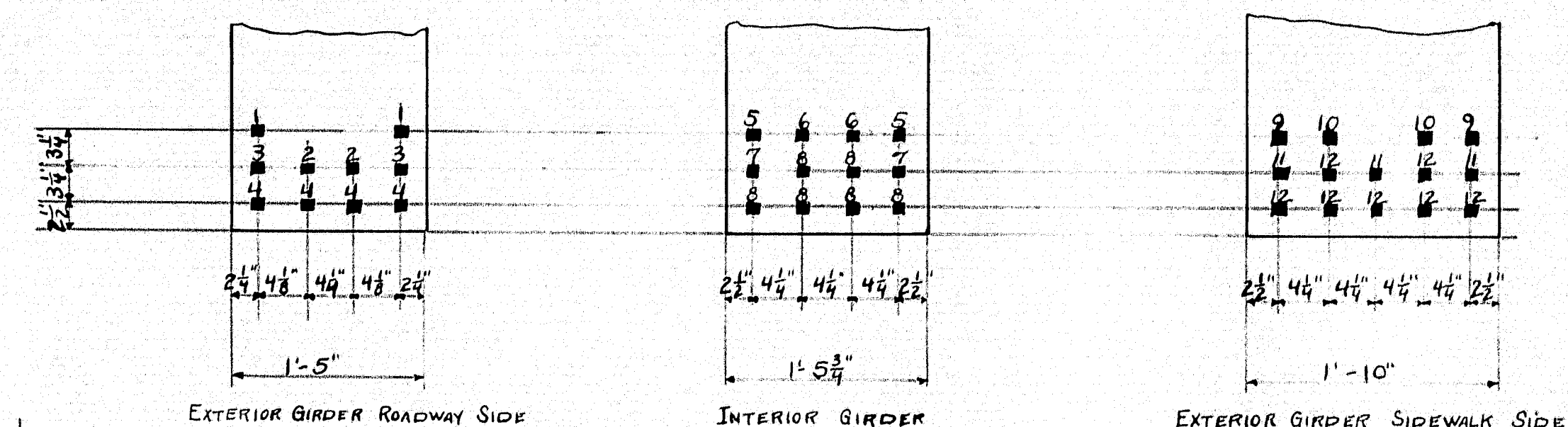


SECTION AT ABUTMENT

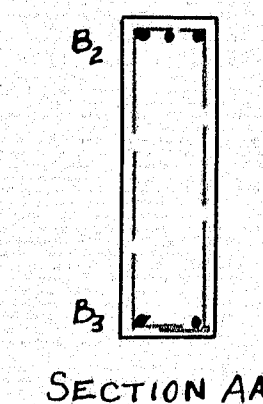
Note: Span 4 similar to span 1.



SECTION OF SPANS 1, 2, 3 & 4
BB



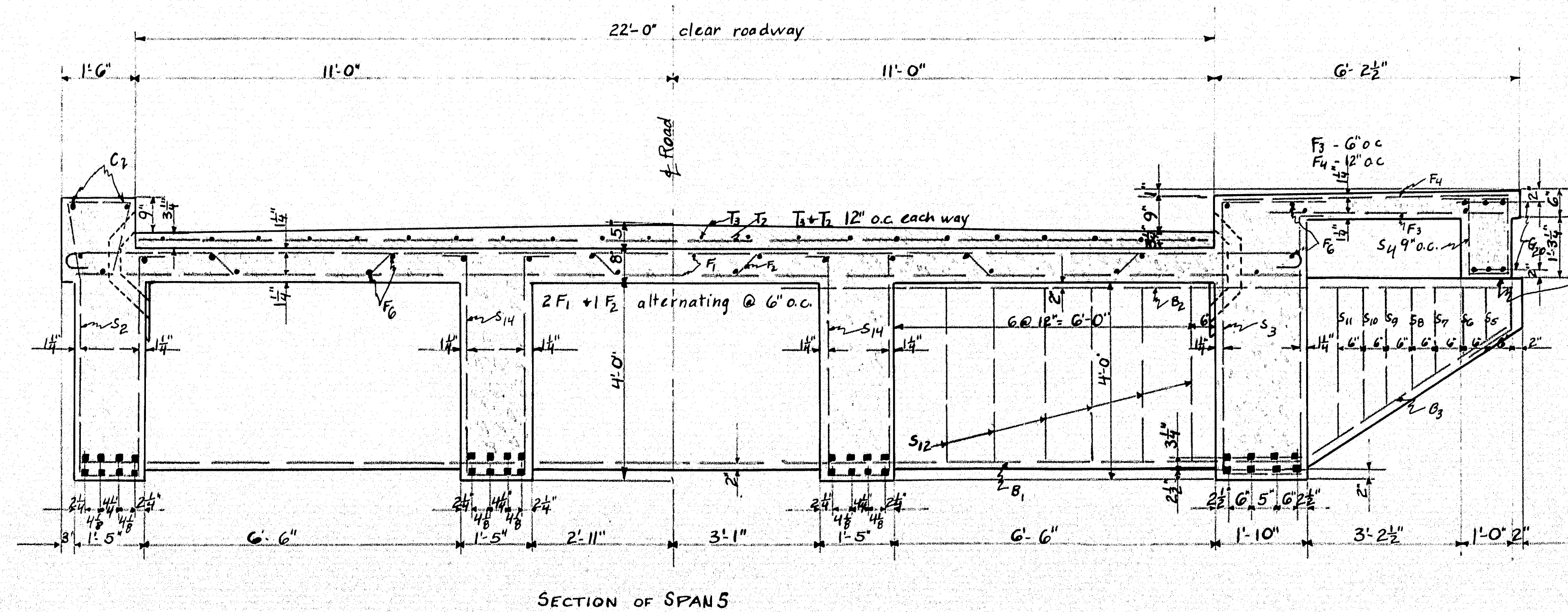
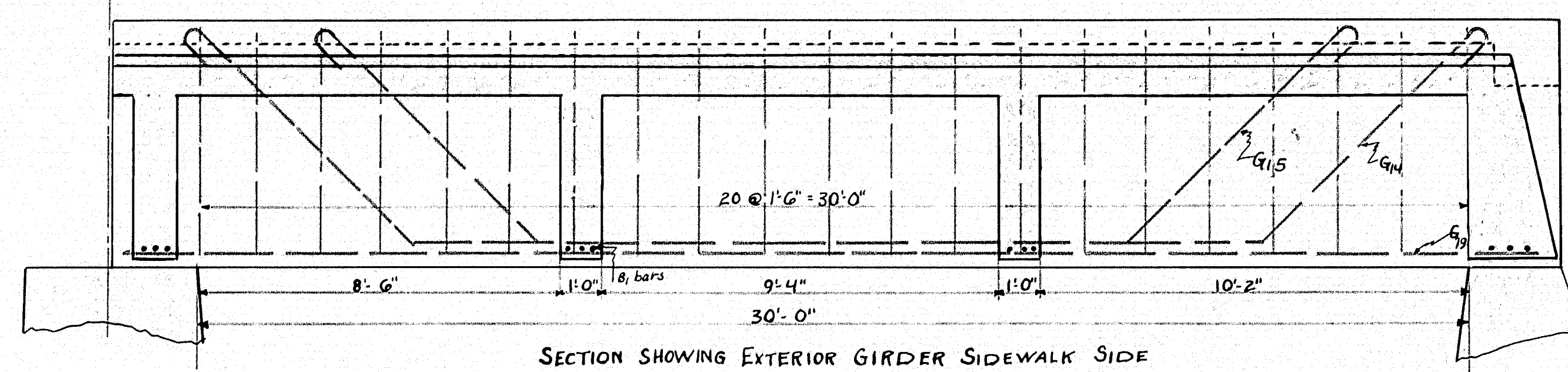
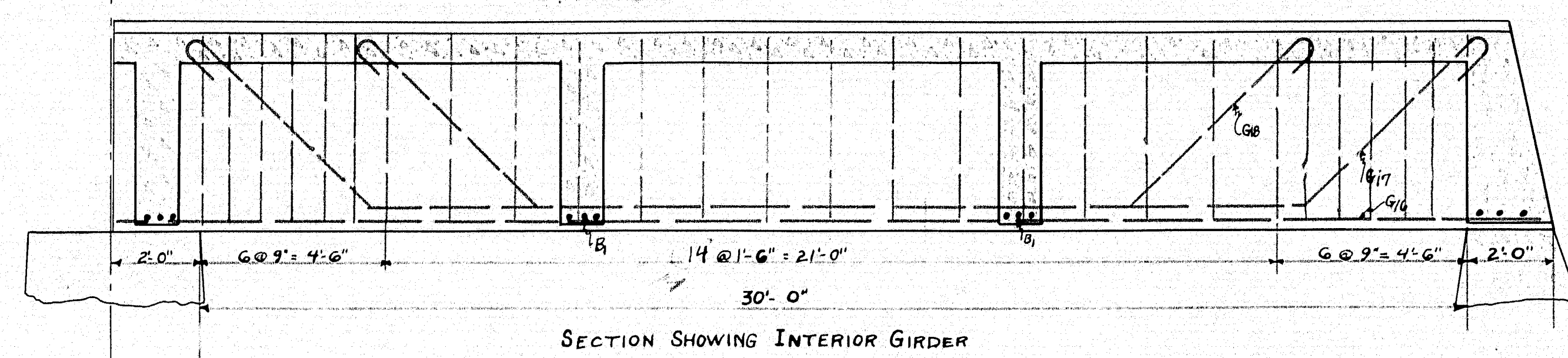
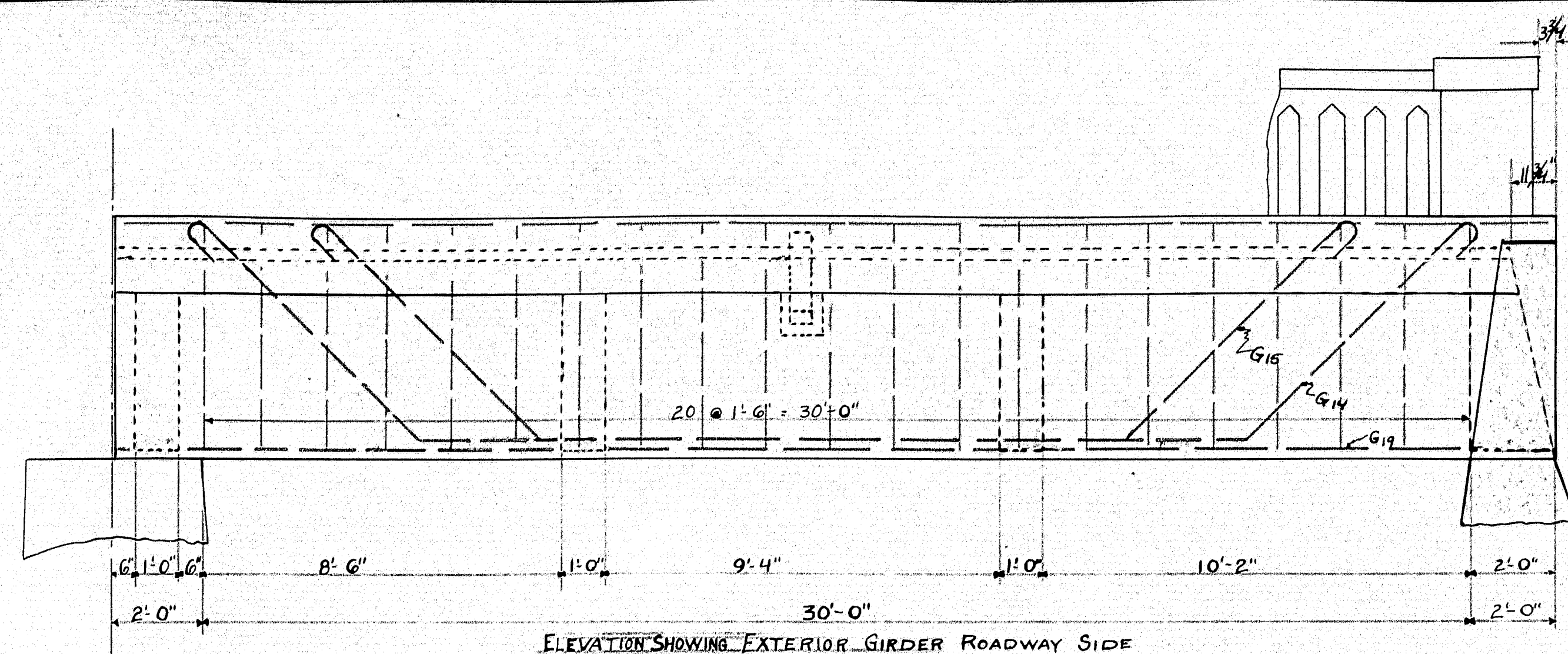
DETAIL OF MAIN GIRDER STEEL "G" BARS



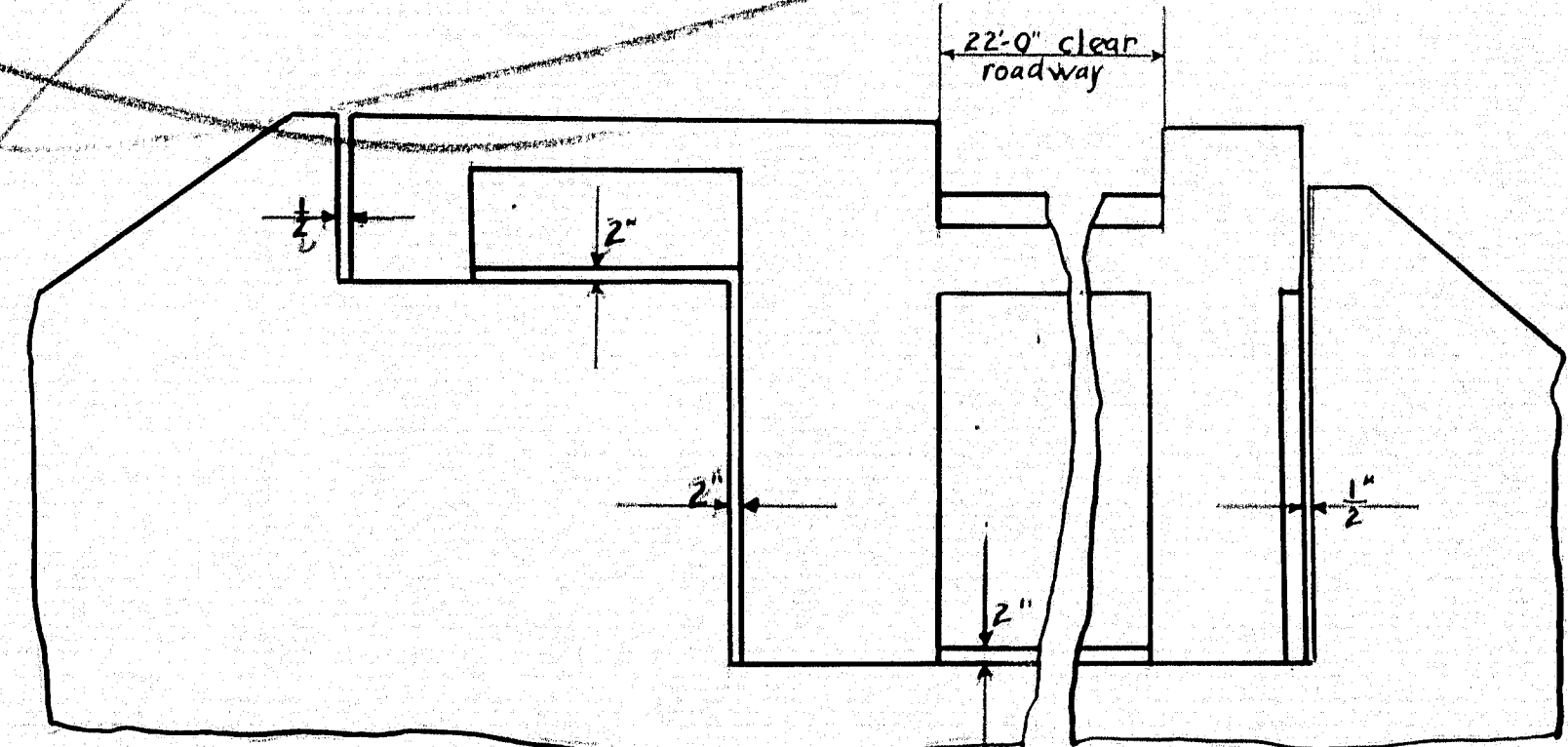
SECTION AA

MAINE HIGHWAY COMMISSION
BRIDGE DIVISION
FARMINGTON FALLS BRIDGE
OVER
SANDY RIVER
IN THE TOWNS OF
FARMINGTON CHESTERVILLE
FRANKLIN CO.
DETAILS OF 50' SPANS
SHEET 3 OF 8 AUGUSTA, ME.

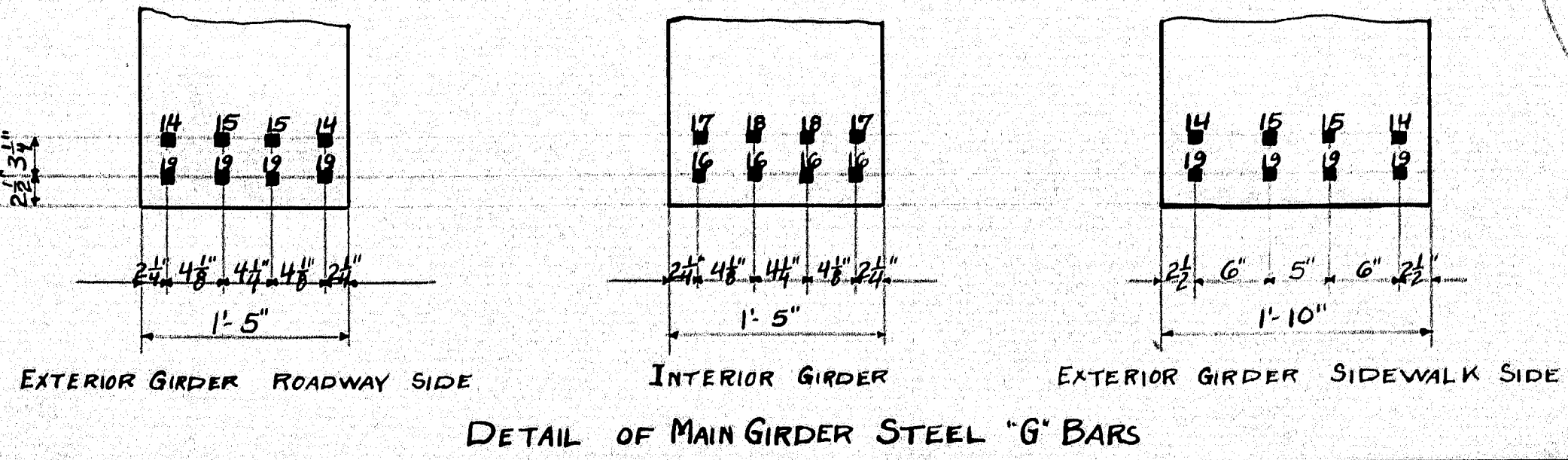
13-182



Note: Use 2 layers roofing felt for expansion at Abut. 2 under sidewalk girder.

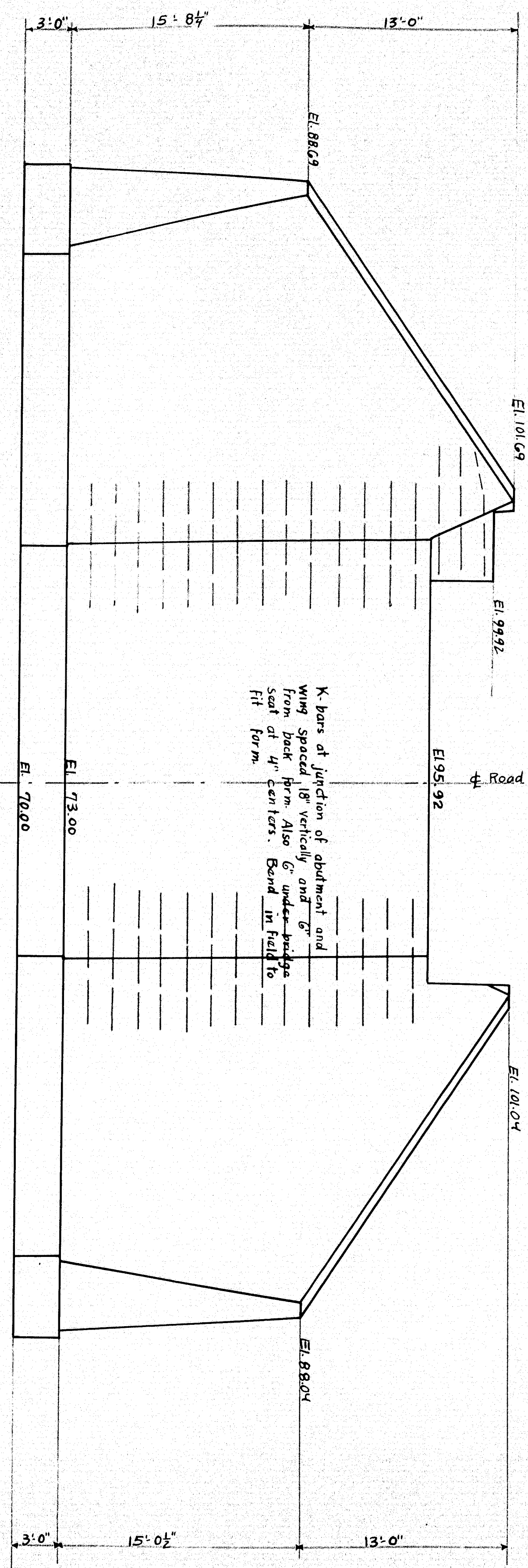


NOTE:
Cover slots between abutments and T-beam on the back side with two layers of heavy roofing felt. Coat surface of concrete and back side of felt as applied with hot tar or asphalt. Felt is to be 10" wide. The area to be covered by felt is to be recessed 1/4" by nailing thin strips to the form before concrete is placed.

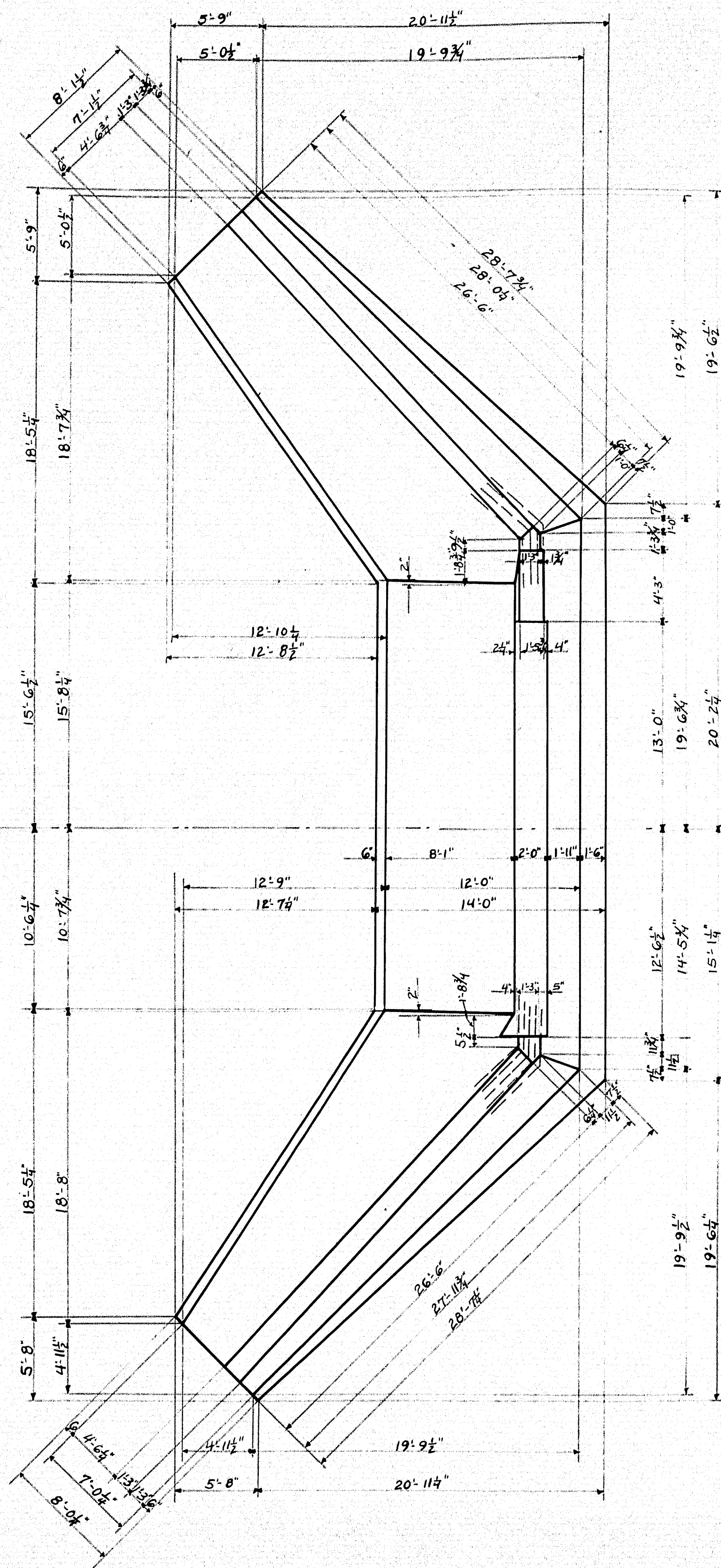


MAINE HIGHWAY COMMISSION
BRIDGE DIVISION
FARMINGTON FALLS BRIDGE
OVER
SANDY RIVER
BETWEEN THE TOWNS OF
FARMINGTON and CHESTERVILLE
FRANKLIN CO.
DETAIL OF 30' SPAN
SHEET 4 OF 8 AUGUSTA, ME.

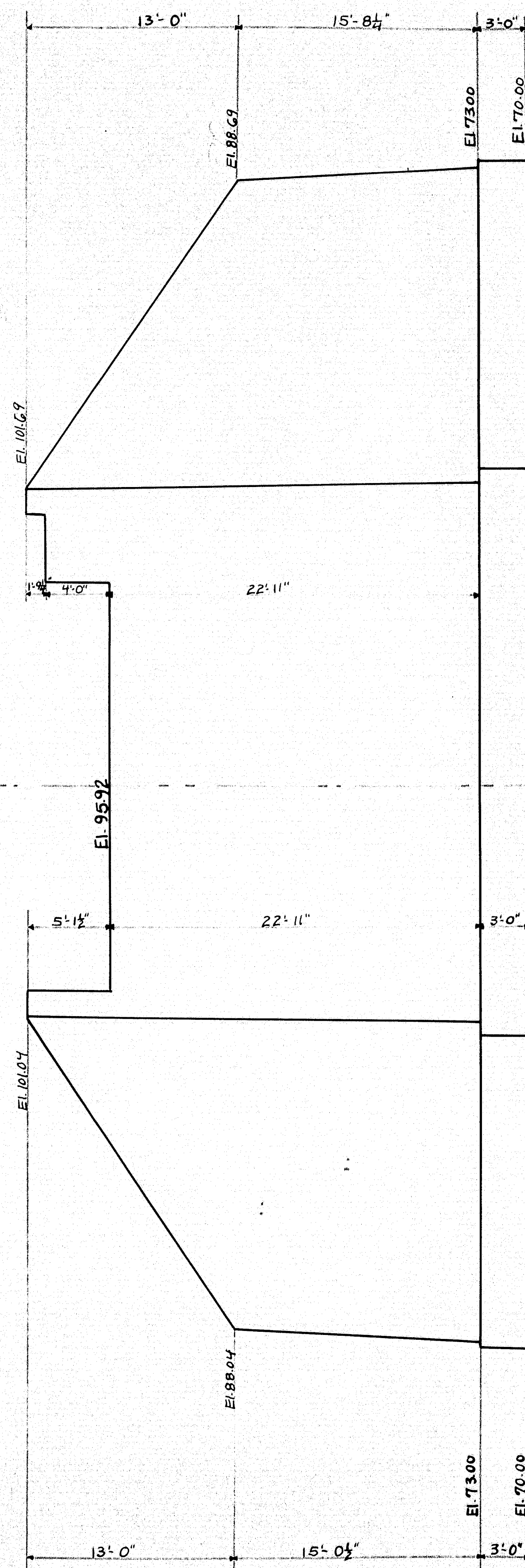
REAR ABUT. No. 1



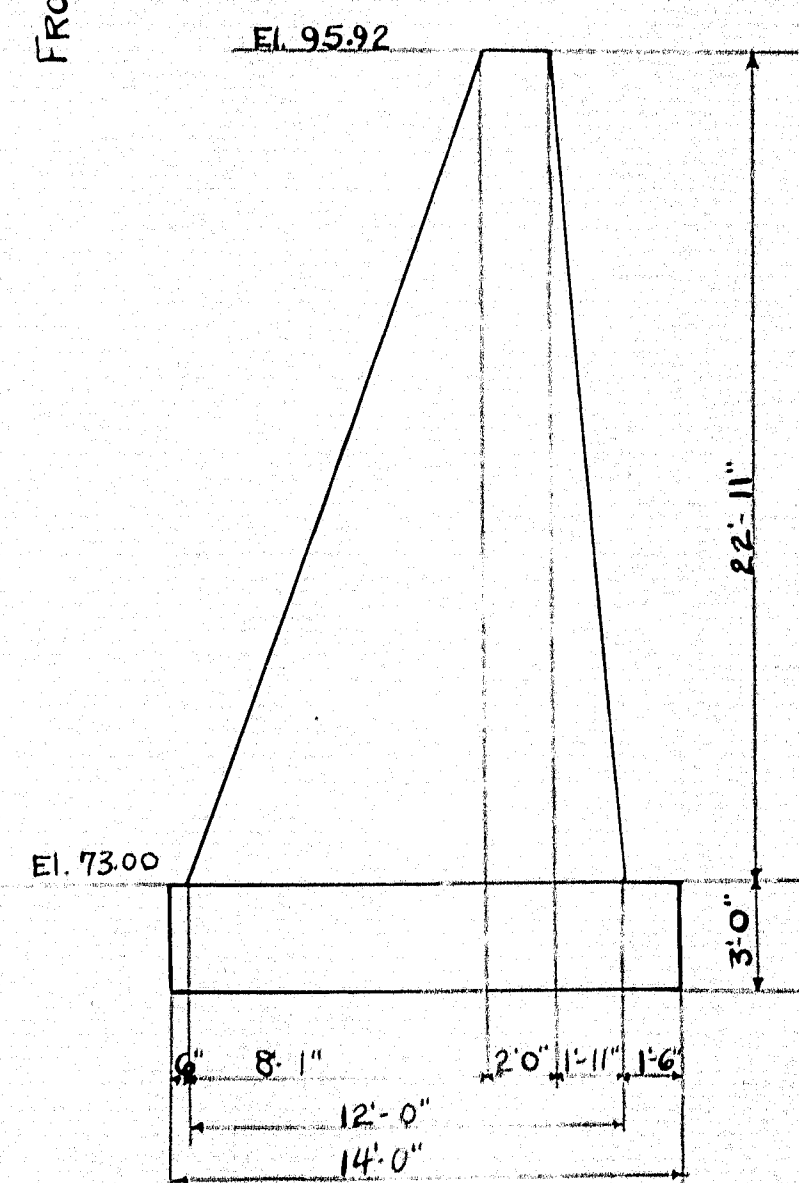
K bars at junction of abutment and wing spaced 18" vertically and 6" from back form Also 6" under bridge seat at 4' centers. Bend in field to fit form.



PLAN ABUT. No. 1



FRONT ABUT. No. 1

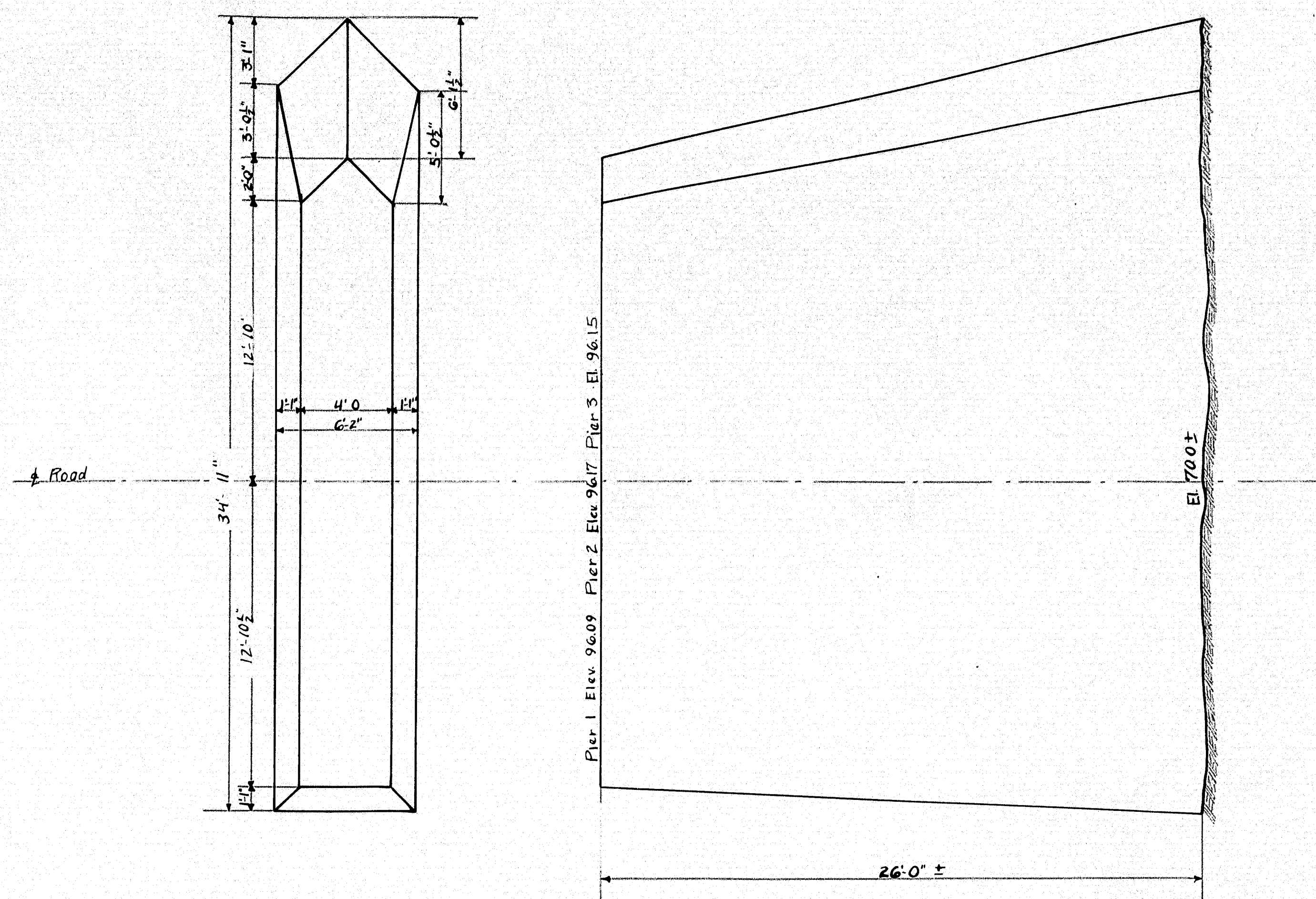


SECTION ABUTMENT

MAINE HIGHWAY COMMISSION
BRIDGE DIVISION
FARMINGTON FALLS BRIDGE
OVER
SANDY RIVER
BETWEEN THE TOWNS OF
FARMINGTON and CHESTERVILLE
FRANKLIN CO.
ABUTMENT No. 1
SHEET 5 OF 8 AUGUSTA, ME.

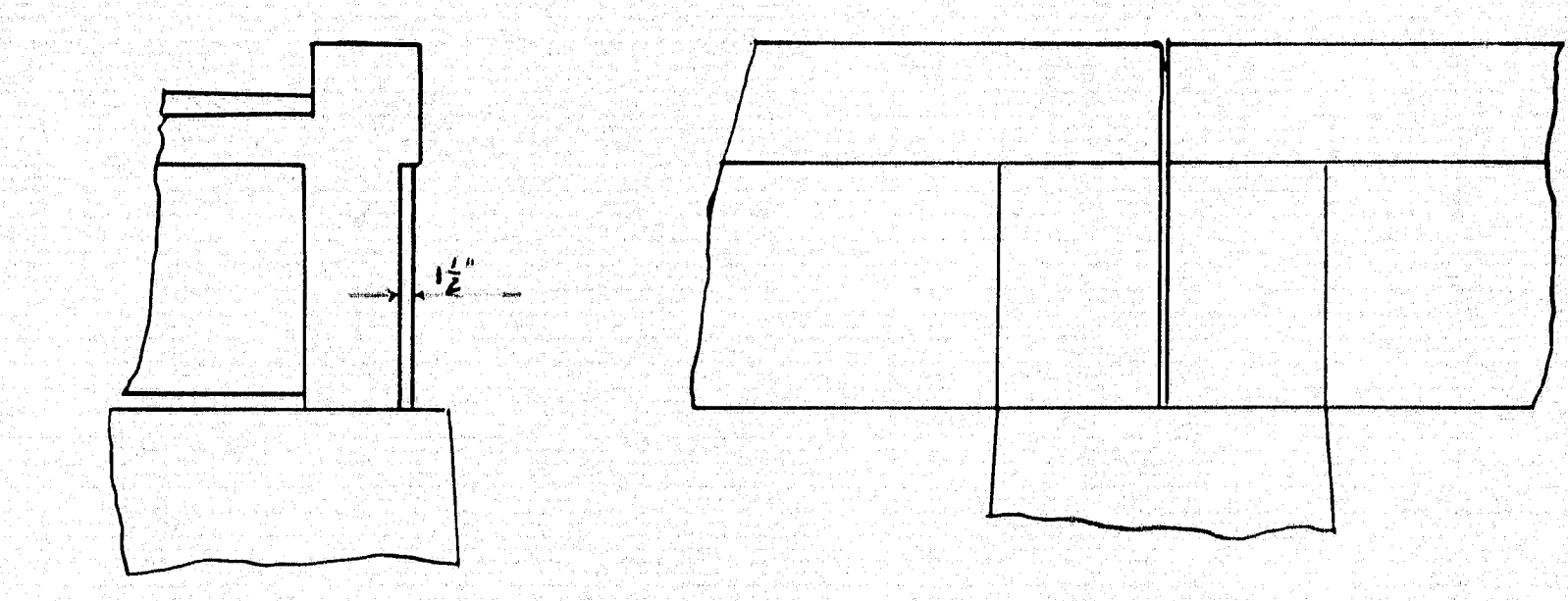
13-184

0 1 2 3 4 5 INCHES



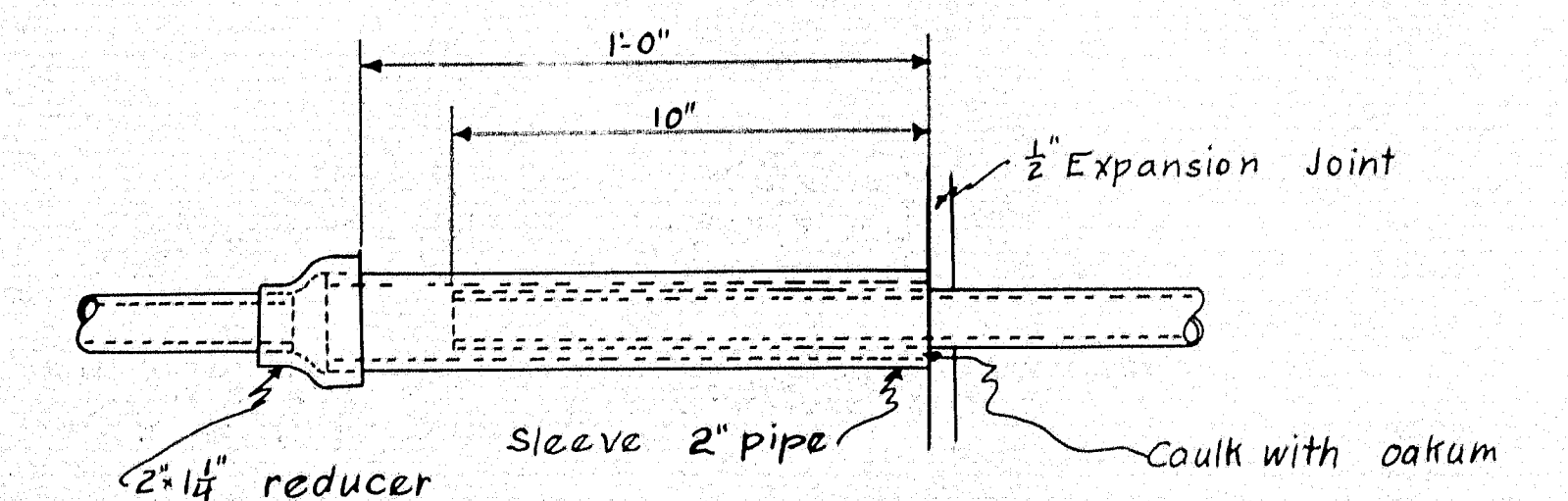
PLAN AND ELEVATION PIERS 1, 2 + 3

PLAN AND ELEVATION PIER 4



TYPICAL ELEVATION AT PIERS ROADWAY SIDE

STEEL SCHEDULE									
BENT BARS									
Mark	Size	No	Length	A	B	C	D	Location	
G ₁	1 1/8"	8	43'-0 3/4"	27'-6"	4'-9 1/4"	4'-5"	6'-6"	Girders Span 1,2,3,4	
G ₂	1 1/8"	8	50'-3 3/4"	34'-0"	5'-0 1/4"	4'-8"	6'-10 1/4"	"	
G ₃	1 1/8"	8	56'-3 3/4"	40'-0"	5'-0 1/4"	4'-8"	6'-10 1/4"	"	
G ₅	1 1/4"	16	39'-9"	27'-0"	3'-9 1/4"	3'-5"	5'-1"	"	
G ₆	1 1/4"	16	47'-3"	34'-6"	3'-9 1/4"	3'-5"	5'-1"	"	
G ₇	1 1/4"	16	55'-5 1/2"	42'-0"	4'-0 1/4"	3'-8"	5'-5 1/4"	"	
G ₉	1 1/4"	8	43'-0 3/4"	27'-6"	4'-9 1/4"	4'-5"	6'-6"	"	
G ₁₀	1 1/4"	8	49'-6 3/4"	34'-0"	4'-9 1/4"	4'-5"	6'-6"	"	
G ₁₁	1 1/4"	12	56'-3 3/4"	40'-0"	5'-0 1/4"	4'-8"	6'-10 1/4"	"	
STRAIGHT BARS									
Mark	Size	No	Length	A	B	C	D	Location	
F ₁	3/8"	430	25'-0"					Floor	
F ₂	1/2"	429	5'-0"					Side walk	
F ₃	1/2"	200	29'-0"					Side walk + Floor Spans 1,2,3,4	
T ₁	3/8"	176	28'-0"					Surfacing 1,2,3,4	
T ₂	3/8"	248	21'-6"					"	
B ₁	3/4"	60	24'-9"					X-beams	
B ₂	3/4"	36	4'-6"					"	
K	3/4"	66	8'-0"					Abutts	
P	3/4"	164	4'-9"					Posts	
P ₂	3/4"	28	3'-6"					"	
R	5/8"	9	10'-6"					Rail cut to fit and splice	
R ₂	5/8"	48	12'-3"					"	
R ₃	5/8"	48	11'-10"					"	
R ₄	5/8"	48	4'-6"					"	
C	5/8"	8	53'-0"					Curb	



DETAIL OF CONDUIT AT EXPANSION JOINT

MAINE HIGHWAY COMMISSION
BRIDGE DIVISION
FARMINGTON FALLS BRIDGE
OVER
SANDY RIVER
BETWEEN THE TOWNS OF
FARMINGTON and CHESTERVILLE
FRANKLIN CO.
DETAIL OF PIERS
SHEET 7 OF 8 AUGUSTA, ME.

